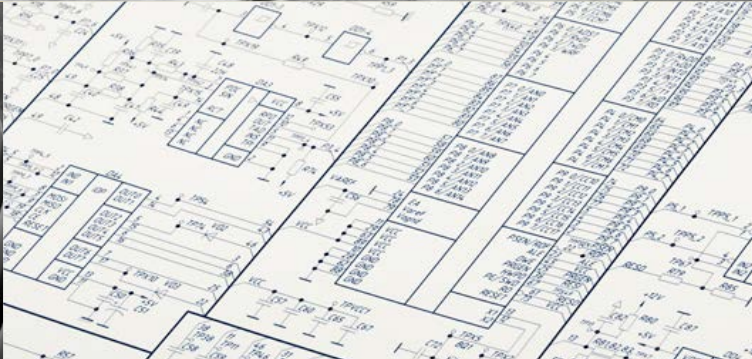
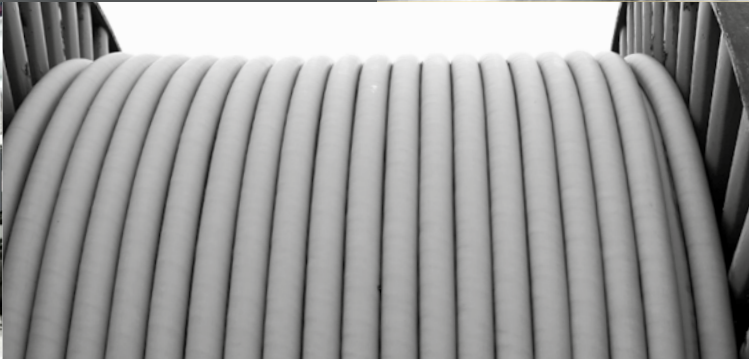


MECHANICAL AND ELECTRICAL CONTRACTING,
INSTALLATION, TESTING AND MAINTENANCE FOR
THE WATER, PROCESS AND NUCLEAR INDUSTRIES





DETECTRONIC IS A MULTI-DISCIPLINED PROVIDER OF WASTE-WATER FLOW & QUALITY MONITORING EQUIPMENT AND SOLUTIONS TO WATER UTILITIES, INDUSTRIAL AND COMMERCIAL ORGANISATIONS ACROSS THE GLOBE.

Our dedicated **MEICA** (Mechanical, Electrical, Instrumentation, Control, Automation) division provides **mechanical and electrical contracting** as well as **maintenance** for public and private sector customers in industrial, water and renewable industries.

Our activities include design, supply, installation, testing, commissioning and maintenance of all mechanical and electrical systems for all types of **MEICA** projects.

Forming an exceptionally strong management team, our three directors each have over 20 years specialist industry experience; working in both the UK and international marketplace.

Now celebrating 10 years of continued growth, **Detectronic** has the people, design tools, software and support systems that allow it to operate at the highest standards and work on projects of any size.

We have earned a reputation for delivering high quality professional services, resulting in long-term relationships with an established customer base.



FROM LOCATIONS ACROSS THE UK AND EUROPE, OUR PROFESSIONAL AND TALENTED TEAMS DELIVER EXCEPTIONAL LEVELS OF SERVICE AND ARE NEVER FAR AWAY.



Head Office

Detectronic Limited
Regent Street, Whitewalls Industrial Estate
Colne, Lancashire BB8 8LJ



Detectronic GmbH
Seegasse 12
91438 Bad Windsheim

COLNE | YORK | SHEFFIELD | OXFORD | EXETER | BAD WINDSHEIM

DETECTRONIC MEICA ENGINEERS ARE PROUD TO HAVE DELIVERED A NUMBER OF HIGHLY ACCLAIMED PROJECTS IN SOME OF THE MOST CHALLENGING ENVIRONMENTS. OUR BUSINESS POLICIES AND PRACTICES ARE APPROVED AND CERTIFIED TO COMPLY WITH INTERNATIONALLY RECOGNISED INDUSTRY STANDARDS.



- MOD nuclear defence sector
- Veolia Water
- Valeo Foods
- Sizewell Nuclear Power Station
- South West Water

Every accreditation we achieve is driven by continuously monitoring and improving our systems.

It is this commitment to quality and environmental standards that has helped us win contracts with organisations large and small, in both the private and public sector.

Detectronic systems, products and services are certified and audited to the following standards:



OUR TALENTED TEAM OF MECHANICAL, ELECTRICAL AND SOFTWARE ENGINEERS WORK TOGETHER TO OFFER THE FULL RANGE OF DESIGN AND CONSULTANCY SERVICES FROM SURVEYS AND FEASIBILITY STUDIES THROUGH TO DETAILED DESIGN AND INSTALLATION.



We work on projects of all sizes across a variety of sectors, including industrial manufacturing, energy, utilities, defence, security, transportation and logistics.

We work closely with clients to identify the best mix of in-house capabilities - combining this into one integrated and complete solution.



This **core team** will advise, manage and support on all aspects of your project, including:

- Project Management
- Design
- Mechanical Services
- Electrical Services
- Instrumentation, Control and Automation Services
- Testing, Inspection and Commissioning
- Maintenance



OUR MECHANICAL SERVICES ARE TAILORED TO EACH PROJECT, UTILISING THE AVAILABLE SPACE TO CREATE **THE MOST EFFICIENT MECHANICAL ENGINEERING SOLUTION**. OUR PORTFOLIO OF MECHANICAL SERVICES CONTRACTS INCLUDE DEFENCE, SECURITY, ENERGY AND UTILITIES.

Typical mechanical works include:

- Pipework
- Valves
- Pumps
- Motors
- Handrailing
- Flooring
- Actuated Valves and Penstocks with Flowmeters
- Bespoke Projects



ALL OUR ELECTRICAL SERVICES CONTRACTS ARE DESIGNED, INSTALLED AND TESTED THOROUGHLY TO BS7671 WIRING REGULATIONS.

We have an extensive portfolio of electrical services contracts carried out across industries which include: industrial manufacturing; defence and security; energy and utilities; hospitality; automotive; pharmaceuticals and chemicals.

Typical installation works include:

- Cabling and Containmentment
- Power Distribution
- Instrumentation
- Telemetry and SCADA
- Lighting
- Power

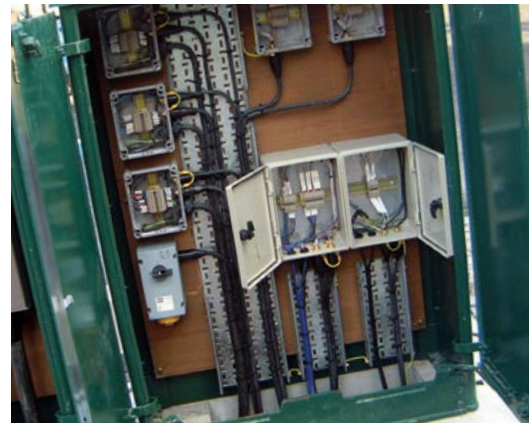
WE PROVIDE INSTRUMENTATION CONTROL AND AUTOMATION ENGINEERING SERVICES TO A WIDE VARIETY OF INDUSTRIES.

Our experts have successfully delivered turnkey projects for DCS, PLC, HMI and SCADA systems.

These installations include developing advanced measurement and control systems, environmental analysis and monitoring.

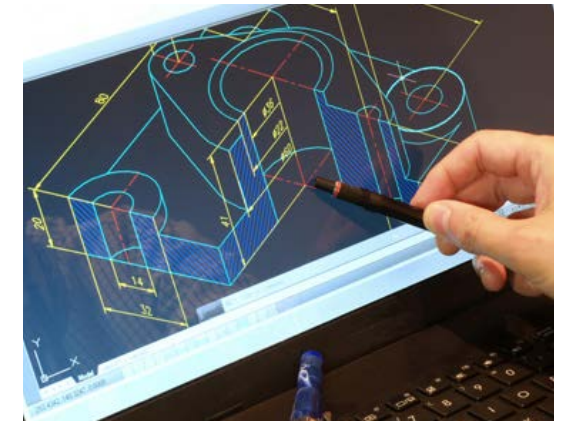
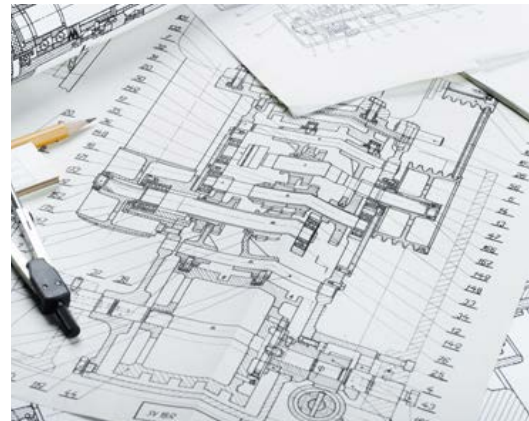
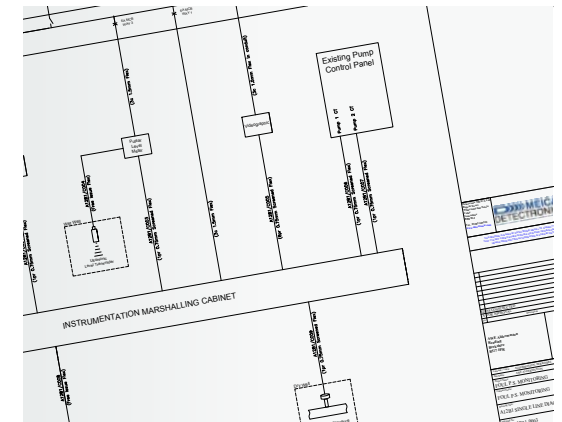
Typical works include:

- Motor Control Centres
- Software
- Telemetry Outstations
- Pump Control



USING PRACTICAL KNOWLEDGE AND **EXTENSIVE CDM EXPERIENCE**, OUR CORE TEAM OF IN-HOUSE DESIGNERS CAN DELIVER A FULL SUITE OF COST EFFECTIVE, INNOVATIVE AND SAFE DESIGN SOLUTIONS. WE USE AMTECH FOR POWER AND CABLE CALCULATIONS AND AUTOCAD FOR PRODUCTION OF ALL SLDs, BLOCK DIAGRAMS AND TERMINATION DRAWINGS.

Using the safest and most appropriate installation methods for the environment, our installation services can be provided as a standalone option or as part of an integrated turnkey solution, fully managed and controlled by the **Detectronic** Group's Project Management team.



AS WELL AS TESTING, INSPECTING AND CERTIFYING THE INSTALLATIONS, WE ALSO PROVIDE COMMISSIONING SERVICES AT THE FINAL STAGE OF YOUR PROJECT PLUS BOTH TESTING AND COMMISSIONING AS PART OF AN ONGOING MAINTENANCE PROGRAMME.



Detectronic MEICA is NICEIC accredited and applies the correct technical and safety standards to check and certify all electrical installations.

Giving you the assurance that your installations and equipment will operate correctly and safely and adhere to all current regulations, is an important part of our methodology. Through a robust and comprehensive project handover, the Project Manager will:

- Evaluate, Inspect and Snag
- Review Health & Safety Performance
- Collate All Documentation
- Prepare and Complete Operation & Maintenance Manuals on handover of each project



AS A FULL SERVICE PROVIDER, **DETECTRONIC MEICA** OFFERS A FLEXIBLE RANGE OF MAINTENANCE SOLUTIONS TO SUIT YOU. OUR SERVICES CAN BE EMPLOYED EITHER AS A FULL PROJECT SOLUTION OR INDIVIDUALLY.



Planned Preventative Maintenance (PPM) is a proven way of preventing minor or major maintenance issues before they occur.

Our PPM maintenance services can be used to manage and maintain your facilities whilst ensuring compliance with changing regulations.

Examples of contracts currently being deployed:

- Regular I/O Telemetry Checks on water companies critical assets
- Inspections of Pump Control Panels and associated instrumentation and pump
- Fixed Wire Testing of pumping stations, treatment plants and factories
- Annual Thermal Imaging on critical plant and power distribution





A bespoke storm overflow design for primary settlement tanks, including designs for the Copasacs, gate valves and high level alarms.



Cabling and containment for installation of instrumentation and motors for a new re-circulation pumping station.



Cabling, containment and isolators for power and profibus driven actuated valves.



Installation of new MCC, cabling and containment work for a new wastewater pumping station.



Power, control and instrumentation installed for a new wastewater pumping station and generator.



Cabling and containment for power supplies to heaters for a new surge vessel.



Power distribution, earthing and UPS for actuated valves and forklift charging point within a factory.



Cabling and cabinet for a Full Flow to Treatment MCERT flowmeter repeater for the EA.



Detectronic systems, products and services are certified and audited to the following standards:



Working in partnership to **improve**
control efficiency for the **water,**
process and **nuclear industries**

For more information about Detectronic MEICA Limited's products, systems and software please call, email or visit the website now.



Detectronic MEICA Limited
Regent Street, Whitewalls Industrial Estate
Colne, Lancashire BB8 8LJ

T: 01282 449 124
E: meica@detectronic.org
W: www.detectronic-meica.org

